

# CANYON ISLES PRESERVE PLAT TWO

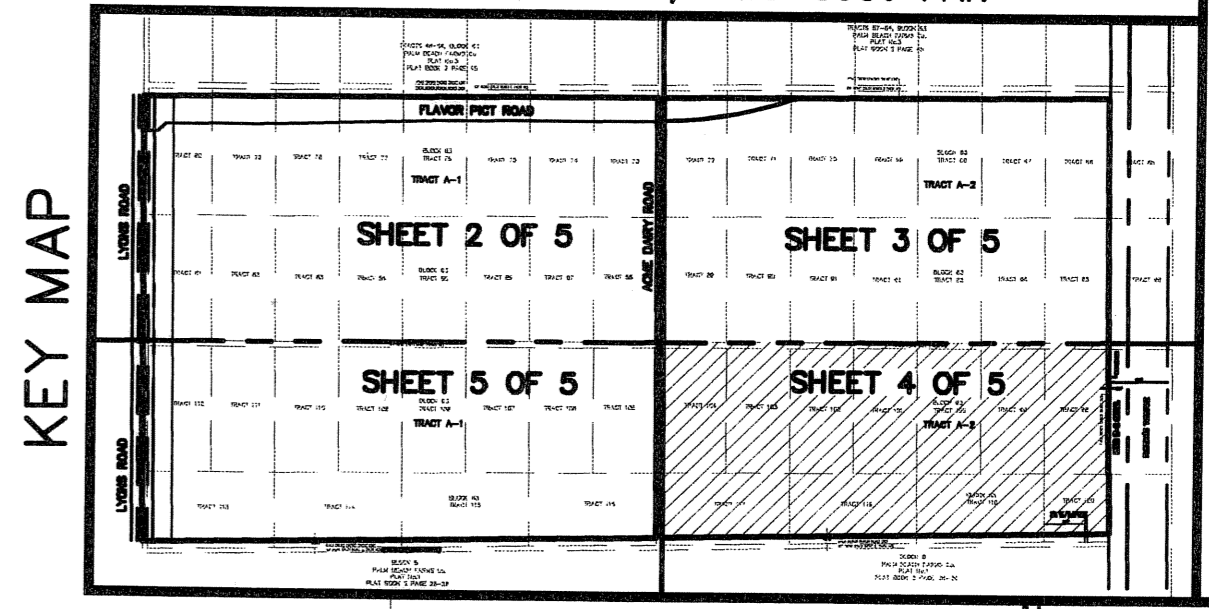
(A.K.A. DUBOIS/ACME DAIRY PRESERVE)

A PARCEL OF LAND IN SECTIONS 5 & 6, TOWNSHIP 46 SOUTH, RANGE 42 EAST, PALM BEACH COUNTY, FLORIDA, BEING A PORTION OF TRACTS 66-95 AND 98-120, BLOCK 63 PALM BEACH FARMS Co. PLAT No. 3, RECORDED IN PLAT BOOK 2, PAGE 45, OF THE PUBLIC RECORDS OF PALM BEACH COUNTY, FLORIDA

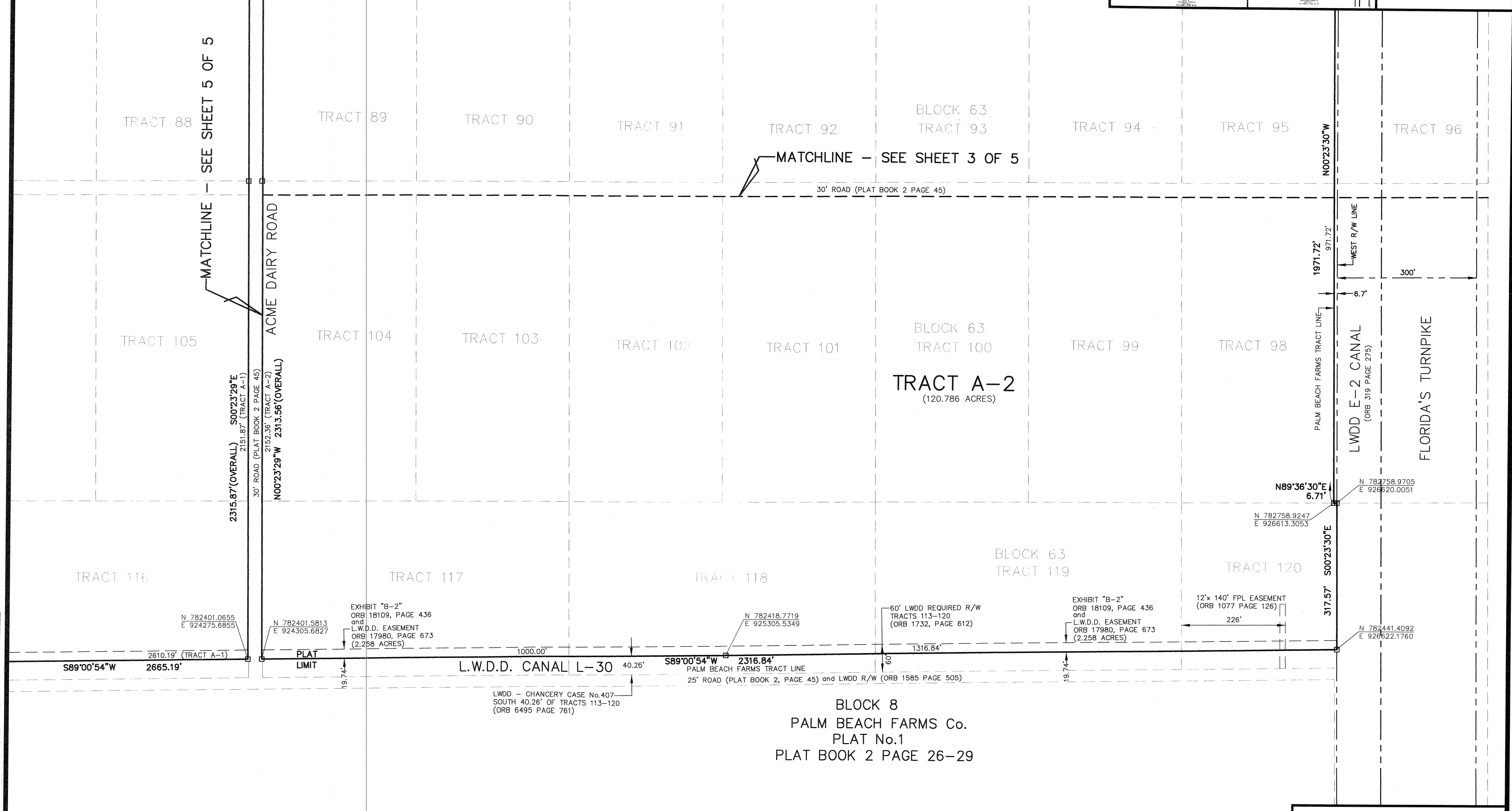
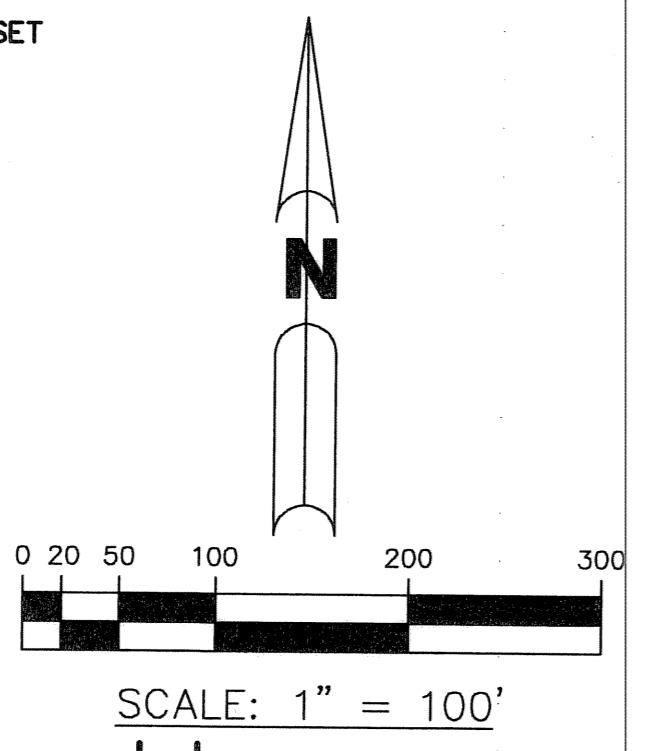
SHEET 4 OF 5 MARCH, 2005

THIS INSTRUMENT WAS PREPARED BY  
 JOHN E. PHILLIPS III, P.S.M. 4826  
**BROWN & PHILLIPS, INC.**  
 CERTIFICATE OF AUTHORIZATION # LB 6473  
 901 NORTHPOINT PARKWAY, SUITE 305  
 WEST PALM BEACH, FLORIDA 33407  
 561-615-3988, 615-3986 FAX

155



- ABBREVIATION LEGEND:**
- P.O.B. - POINT OF BEGINNING
  - P.O.C. - POINT OF COMMENCEMENT
  - PRM - PERMANENT REFERENCE MONUMENT
  - - PERMANENT REFERENCE MONUMENT "LB6473" SET
  - - MONUMENT, 1/2" IRON ROD WITH "BROWN & PHILLIPS" CAP TO BE SET
  - U.E. - UTILITY EASEMENT
  - D.E. - DRAINAGE EASEMENT
  - L.A.E. - LIMITED ACCESS EASEMENT
  - R/W - RIGHT-OF-WAY
  - ⊙ - CENTERLINE
  - L.W.D.D. - LAKE WORTH DRAINAGE DISTRICT
  - R/W - RIGHT-OF-WAY
  - ORB - OFFICIAL RECORD BOOK
  - P.B. - PLAT BOOK
  - D.B. - DEED BOOK
  - FND. - FOUND
  - CONC. - CONCRETE
  - (P) - PLAT BEARING OR DISTANCE
  - (M) - MEASURED BEARING OR DISTANCE
  - (C) - CALCULATED BEARING OR DISTANCE
  - (D) - DEEDED BEARING OR DISTANCE
  - PBCo - PALM BEACH COUNTY



SUBDIVISION CANYON ISLES PRESERVE PLAT TWO  
 BOOK 104 PAGE 155  
 FLOOD ZONE B FLOOD MAP # 200A  
 QUAD # 51 ZONING PDD  
 SE ZIP CODE 33487  
 TAZ 154  
 PUB NAME

BLOCK 8  
 PALM BEACH FARMS Co.  
 PLAT No.1  
 PLAT BOOK 2 PAGE 26-29